

Culbertson CONNECTION

Your Health. Your Hospital.



CATCH
CULBERTSON AS THE CHOICE HOSPITAL

- P2: Update from the Executive Director
- P3: Campus Construction Update
- P4: Welcoming Our New CEO
- P5: Types of Yearly Visits
- P6: The Importance of Pediatric Therapy
- P8: New Scopes
- P9: Memorials & Contributions
- P10: Outpatient Specialty Clinics
- P12: Get to Know Your Providers

Update from the Executive Director

As I look ahead to the future of Sarah D. Culbertson Memorial Hospital, I want to take a moment to share my gratitude and perspective as my time leading the organization comes to a close.

Serving Culbertson and the communities of Schuyler County and the surrounding region has been one of the great privileges of my career. For more than a decade — first as a board member and later in executive leadership — I have had the opportunity to work alongside dedicated staff, providers, board members, and community partners who care deeply about ensuring access to high quality healthcare close to home.

As announced, I will step down from my role effective May 18, 2026, as part of a thoughtful and proactive leadership transition. This decision reflects our responsibility not just to today's needs, but to the long term strength of this organization. With facility renovations underway and new opportunities ahead, this is the right time to position Culbertson for continued long-term success and growth.

I am confident in the future of this hospital and especially in the leadership of Josh Ulery, who will assume the role of Chief Executive Officer. Josh brings strong experience, clear values, and a genuine commitment to this community.

Ensuring a strong hospital presence in this community is essential to the long term stability of the region. This step reflects our commitment to sustaining and strengthening that role. Thank you for your trust, your support, and your continued belief in Culbertson as your community hospital.

With sincere appreciation,

Gregg Snyder

**Executive Director,
Culbertson
Memorial Hospital**



MASTER FACILITY UPDATE

Campus Construction Update

Construction continues across the Culbertson Memorial Hospital campus with several important projects making steady progress.

Work on the medical surgical (med surg) room renovations is moving forward as planned. The first phase of renovated patient rooms is nearing completion. The timeline for placing these rooms into service has been slightly adjusted as the team addresses a handful of unforeseen regulatory requirements. While this has resulted in a brief delay, these steps are essential to ensure full compliance and the long term success of the project. Currently, the first set of med surg rooms is anticipated to be ready for patient use no later than early August. Once the initial rooms are operational, contractors will transition directly into the second phase of the renovation, which includes the remaining patient rooms. This portion of the project is expected to take approximately five months.

Alongside construction efforts, progress is also being made on the administrative side of the campus renovation.

Culbertson Memorial Hospital is advancing through the Certificate of Need (CON) approval process for the remaining scope of work. We are pleased to report the application has been officially accepted and is scheduled to be reviewed at the June 2 meeting of the Illinois Department of Public Health (IDPH) Facility Review Board.

In addition, the Culbertson Memorial Hospital Foundation is nearing completion of the new therapy facility. The building is expected to open around July and will feature nearly double the square footage of the current therapy space. This expansion will create meaningful opportunities for service growth while significantly enhancing the overall patient experience.

We appreciate the continued patience and support of our staff, patients, and community as these important improvements take shape. Additional updates will be shared as milestones are reached.

New Patient Rooms



INTRODUCTION OF NEW CEO

Welcoming Joshua D. Ulery

Sarah D. Culbertson Memorial Hospital is proud to welcome Joshua D. Ulery, MBA, MHA, CHSP, LSSGB as our new Chief Executive Officer. With a strong background in healthcare leadership, a commitment to service, and deep roots in rural values, Josh brings both experience and perspective that align closely with our mission and the community we serve.

Raised on a family farm in Central Illinois, Josh learned early lessons that continue to shape his leadership approach today. “Growing up on a family farm taught me the value of hard work, humility, and accountability,” he shared. “You learn quickly that you can’t cut corners; the work reflects the care you put into it. That experience shaped my leadership philosophy: Be present, listen carefully, and make decisions that balance today’s needs with long-term stewardship.”

Josh’s journey into healthcare was driven by a desire to continue serving others following his time in the United States Navy.

“Healthcare offered a way to make a meaningful impact. Supporting teams that care for people at their most vulnerable moments is a privilege, and it’s what motivates me every day.”

– Joshua D. Ulery, MBA, MHA, CHSP, LSSGB

That sense of service and accountability remains central to his leadership style. Known for being approachable and relationship-focused, Josh emphasizes listening and learning as a first step. “The people closest to the work often have the clearest insights,” he explained. “My role is to ask the right questions, remove obstacles, and create alignment around shared goals.”

Josh approaches healthcare much like farming, thoughtfully managing resources while planning for the future. “You can’t cut your way to success any more than you can spend your way to success,” he noted. “Our goal is to ensure this hospital remains strong and available for generations to come.”

As he begins his role at Culbertson, Josh is focused on building trust across the organization and throughout the community.

“Trust is built through transparency, follow-through, and presence,” he said. “I plan to be visible, accessible, and engaged — spending time with our teams, our providers, and our community partners to understand what’s working well and where we can improve.”



Josh sees strong alignment between his rural upbringing and the values of the Culbertson community. “Rural communities take care of one another. There’s a sense of connection, responsibility, and pride that is deeply meaningful to me,” he shared. “Serving a community like this feels like coming home.”

Looking ahead, Josh is energized by the opportunity to build on the hospital’s strong foundation. His early priorities include listening and learning, strengthening operations, and identifying opportunities to expand services while maintaining financial stability. “Culbertson has a committed team and a community that truly values its hospital,” he said. “I’m excited to build on that strength and ensure long-term sustainability for a hospital that is essential to this region.”

Beyond clinical care, Josh believes the hospital plays a vital role in the overall health and well-being of the community. “We should be a partner in education, prevention, and outreach,” he said. “When the hospital and community work together, we create a stronger, healthier region.”

For those meeting him for the first time, Josh offers a simple message: “I’m honored to serve this community, and I’m committed to earning your trust. My goal is to ensure Sarah D. Culbertson Memorial Hospital remains strong, stable, and positioned to meet your healthcare needs for years to come.”

Please join us in welcoming Josh and his family to the Culbertson community.

TYPES OF YEARLY VISITS

Two Visits, One Goal: Keeping You Healthy

Many people think their yearly visit covers everything they need. But there are actually **two different types of care**, and both are important for your health.

A **preventive visit** is your yearly check-up. It focuses on helping you stay healthy. During this visit, your provider may check your blood pressure, review your medications, update vaccines, and talk with you about healthy habits.

A **chronic care visit** is different. It focuses on managing health problems you already have, such as diabetes, high blood pressure, heart disease, or asthma. These visits help make sure your condition is under control and your treatment plan is working.

Why can't everything be done in one visit?

These visits serve different purposes and often require different amounts of time. Your provider wants to make sure each part of your care gets the full attention it deserves so nothing is overlooked. Because Culbertson Clinics are Rural Health Clinics, wellness visits are not routinely done at the same time as visits needed to manage medical conditions. In many cases, especially when conditions require closer attention, it is better — and necessary — to schedule a separate visit.

Why scheduling both matters for your health

If you only come in for a preventive visit, your chronic conditions may not receive the detailed attention they require. On the other hand, if you only schedule visits to manage chronic conditions, you may miss important screenings and early warning signs of new health issues. Scheduling both types of visits ensures you stay up to date on preventive care while also keeping your ongoing conditions properly monitored and managed.

What this means for you

If you have conditions such as diabetes, high blood pressure, asthma, or heart disease, you will be asked to schedule both your annual preventive visit and separate follow-up appointments to manage your condition. This is not about adding unnecessary visits, but about ensuring you receive the right care at the right time to stay healthy and keep your condition well controlled. These visits are designed for different purposes and insurance often treats them differently too. Preventive visits are often covered at no cost. Visits that involve managing ongoing conditions include a copay.

We're here to help

We know this can feel confusing, and we're always happy to walk you through what kind of visit you need and why. So, whether you're coming in because you feel great or because something needs attention, we're here to take care of you.

PREVENTATIVE VISITS (ANNUAL CHECK UPS OR MEDICARE WELLNESS VISITS)

If you're feeling well, this is your time to stay ahead of future health problems.

- Screenings (like blood pressure, cholesterol, cancer screenings)
- Vaccines
- Lifestyle guidance (nutrition, exercise, quitting smoking)
- Catching potential issues early

CHRONIC CONDITION VISITS (MANAGING ONGOING HEALTH ISSUES)

These visits are essential to keep your condition under control and avoid serious health risks. If you have conditions like diabetes, high blood pressure, asthma, or heart disease, these visits are different.

We focus on:

- Monitoring your condition
- Reviewing labs (like A1C or cholesterol)
- Adjusting medications
- Preventing complications



PEDIATRIC THERAPY SERVICES AT CULBERTSON

Supporting Our Youngest Patients: The Importance of Pediatric Therapy at Culbertson

Every child deserves the opportunity to grow, learn, and reach their full potential. For some, that journey includes additional support through pediatric therapy, an essential service that builds the foundational skills needed for everyday life. At Culbertson Memorial Hospital, our Therapy Services team helps children and families navigate developmental challenges with expertise, compassion, and a personalized approach.

Why Pediatric Therapy Matters

Early childhood is a critical window for development. Communication, movement, coordination, and sensory processing skills are all emerging. When delays occur, early intervention can make a lasting difference.

“Early intervention allows us to begin building positive skills and habits early on.”
– Occupational Therapy Assistant Lucas Wyatt.

“We can support social development, motor skills, and functional abilities before children even begin school.” Pediatric therapy isn’t just about addressing challenges; it’s also about unlocking potential. With the right support, children gain confidence, independence, and the tools they need to succeed at home, in school, and in their community.



A Team-Based, Family-Centered Approach

Culbertson Therapy Services stands out for its multidisciplinary model. Physical, occupational, and speech therapy providers work closely together to deliver coordinated, individualized care.

“We are multidisciplinary-focused and work closely with each other. If another discipline would benefit the child, we collaborate with the family and provider to ensure the right care is in place.”
– Therapy Director Cathy Wilson, PT.

Families are central to this process. Therapists provide education, strategies, and home activities to reinforce progress outside of sessions.

“Involving parents is essential,” Wyatt added. “Consistency at home helps children build and maintain the skills they’re learning.” Speech Therapist Jenna Patterson emphasized no two care plans are the same: “We use play-based, age-appropriate methods tailored to each child. There’s no one-size-fits-all approach; we meet each child where they are.”

Learning Through Play

Pediatric therapy looks different from adult therapy because it’s rooted in play. Sessions often include games, imaginative activities, and sensory experiences that help children feel safe, engaged, and motivated. This approach builds not only skills, but also trust, creating an environment where children can explore, succeed, and gradually take on new challenges.

“Sometimes that means making silly animal sounds or playing games,” Wilson said. “It allows us to see the world through their eyes while helping them reach important milestones.”

Growing to Meet Community Needs

Culbertson is expanding pediatric therapy services with a new facility that has specifically designed areas for children and families.

“Our new space will allow for more sensory-specific equipment and room for future expansion. It will also provide a more private waiting area, which is incredibly important for families navigating emotional or stressful situations.”
– Therapy Director Cathy Wilson, PT.

A dedicated pediatric therapy area will create a more comfortable, welcoming experience while enhanced sensory rooms will give therapists additional tools to help children regulate, engage, and express themselves through play. Access to timely care is another key advantage. Compared to larger facilities, Culbertson often has shorter wait times and can complete evaluations quickly to provide families with helpful resources. Starting therapy sooner can make a meaningful difference in a child's developmental trajectory and having services close to home makes consistency possible.



Local Care, Lasting Impact: Russell's Story

When Mackenzie Malcomson looks back, she remembers uncertainty. "At around 18 months, we noticed less language in Russell than what would be considered typical," she said. "By 3 years old, he still had very little speech. Most days were a struggle because he was trying so hard to communicate but couldn't." Everyday activities became overwhelming. Trusting her instincts, Mackenzie sought help.

Taking the First Step

Living close to Culbertson Memorial Hospital made the decision easier. After hearing about the hospital's therapy services, she scheduled an evaluation.

"The process was quick. We determined he would benefit greatly from speech therapy," she said. "Almost immediately, we saw progress." Russell began weekly sessions with Speech-Language Pathologist Jenna Patterson, forming a relationship that would become foundational to his growth.

Building Communication & Confidence

At the start, Russell's goals focused on basic communication: expressing needs and connecting with others.

"In the beginning, our focus was helping him communicate in any form," Jenna said, adding the therapy team prioritized simple words like "mom," "dad," and "eat." Using a play-based, child-led approach, therapy sessions were tailored to Russell's needs, building trust, encouraging engagement, and creating a supportive, predictable environment. Therapy isn't just about treating the child. "It's about supporting the entire family and creating consistency between sessions, home, and school."

A Team Approach That Matters

As Russell progressed, his care expanded to include occupational therapy. Collaboration between therapists, family members, and school staff ensured consistency across all environments.

"At Culbertson, they meet you where you are. They answer questions, provide guidance for home, and truly become part of your family's journey."

– Mackenzie Malcomson

Over time, those early goals turned into life-changing progress. One breakthrough moment stands out: "Hearing him say, 'I love you,' to his mom for the first time, that was a tearful moment," Jenna shared. Today, Russell communicates clearly, speaks in full sentences, and shares stories about his day. "We started with a 3-year-old who was barely communicating," Mackenzie said. "Now he has a huge vocabulary. He's a completely different child."

More Than Therapy

Equally important is how Russell feels during care. The therapy office has become a place of comfort where he feels safe, supported, and excited to learn. That sense of trust allows children to fully engage and make meaningful progress. Mackenzie encourages parents to trust their instincts. "If you have concerns, reach out," she said. "An evaluation is quick, easy, and can give you the answers you need. Sometimes a little support can make all the difference."

Russell's journey reflects what families can expect from the Culbertson Pediatric Therapy team: individualized care, strong relationships, and a commitment to helping every child thrive. With expanded facilities, advanced sensory equipment, and a collaborative, family-centered approach, Culbertson is proud to support children — and the families who walk alongside them — every step of the way.

NEW SCOPES

A Towering Impact: Thank You to Our Generous Donors

Because of CMH Foundation Donors, exceptional care continues to grow right here at Culbertson Memorial Hospital. Earlier this year, we shared our goal of raising funds through our Annual Appeal to bring new gastrointestinal and laparoscopic towers to our Surgery Department. Today, we're proud to share that thanks to the generosity of our donors, this goal has been achieved. The new equipment is in place, in use, and already making a meaningful difference for our patients and providers. These advanced towers are more than just new technology — they also represent a significant step forward in how care is delivered in our community. With enhanced 4K visualization, improved precision, and expanded capabilities, our physicians can diagnose conditions earlier, perform procedures more efficiently, and support better outcomes for every patient they serve.

The impact of your support is already evident. Dr. John Bozdech, Gastroenterology, has already seen how these upgrades are reducing unnecessary procedures and improving safety. "On the first day I used the new equipment, we were able to avoid removing two polyps that were clearly not precancerous. With older systems, those would have been removed — adding time, cost, and risk for the patient. This investment is improving the quality, safety, and efficiency of care." For patients undergoing endoscopic procedures, this means fewer unnecessary interventions and a more precise approach to care.

Dr. Adam Niemann, Gastroenterology, emphasized how the new technology enhances both safety and early detection. "The new scope towers have significantly improved our ability to perform procedures safely and effectively. We can now visualize subtle, often missed

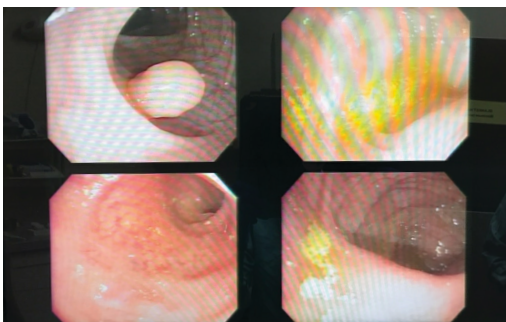
precancerous lesions and remove them before they turn into cancer. This allows us to provide exceptional, up-to-date care close to home." This translates to earlier detection of serious conditions — often before symptoms even appear — and a better chance at prevention rather than treatment.

Dr. James W. Thiele, Colon & Rectal Surgery, highlighted how improved imaging and flexibility directly impact outcomes. "The high-definition resolution and improved flexibility of these scopes allow us to better see and remove precancerous lesions. Combined with our dedicated team, this technology strengthens patient safety and our ability to prevent colon cancer in our community." This means more accurate procedures, fewer complications, and a stronger focus on prevention — one of the most powerful tools in healthcare.

Dr. Matthew Knudson, Urology, pointed to the benefits in long-term patient care. "The improved image quality allows for better documentation that can be directly added to a patient's chart, helping guide future care and ensuring continuity." For patients, that means better communication, clearer records, and more informed care decisions over time. Dr. Todd Petty, General Surgery, shared how precision during surgery is improving healing and recovery. "With better visualization, we can perform more precise procedures. This leads to less tissue inflammation, better healing, and improved outcomes for our patients." In practical terms, patients benefit from less trauma during surgery, shorter recovery times, and a quicker return to daily life.

These are not small improvements; they are meaningful advancements that directly affect patient safety, comfort, and outcomes. None of this would have been possible without you. Every donation to the Annual Appeal played a role in bringing this technology to life. Every gift, no matter the size, helped ensure patients in our community can receive high-quality, advanced care close to home.

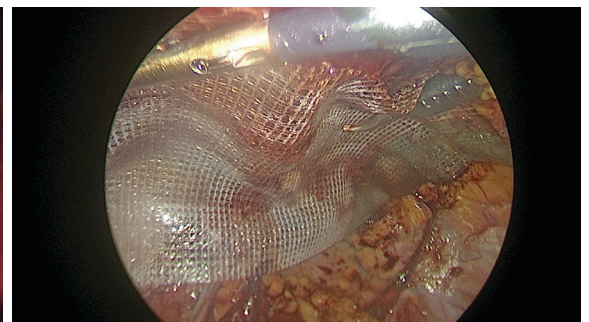
This is what philanthropy looks like in action: Earlier diagnoses, safer procedures, faster recoveries, and lives changed for the better. On behalf of our physicians, staff, and the patients whose lives you have impacted, thank you for your generosity, your trust, and your commitment to the future of healthcare at Sarah D. Culbertson Memorial Hospital.



Older Tower – Colonoscopy



New Tower – Colonoscopy



Hernia Mesh



Memorials & Contributions

Foundation Donors

2025 – 2026 ANNUAL CAMPAIGN

Mr. and Mrs. Steve Ashcraft
In memory of Brixtn Cox

Mr. and Mrs. Robert Baker
Beardstown Healthcare Foundation
Beardstown Savings
Better Banks
Mrs. Tammy Behymer
In memory of Terry Behymer
and LeeRoy and Wilma Behymer

Mr. and Mrs. Jim Blackburn
In memory of Steve Blackburn
and Mark Blackburn

Mrs. Karen Bockwitz

Mr. and Mrs. Steve Boehm
In memory of Don
and Elizabeth Boehm

Mrs. Darlene Chockley
In memory of
Rev. Marvin Chockley

Country Gardens

Mrs. Jan Devitt

Mr. Mark Dohner

Mr. and Mrs. Butch Edlin
In memory of our loved ones

Mr. and Mrs. Jeff Ervin

First Bankers Trust Company

Mr. and Mrs. Jeremy Flynn

Mr. and Mrs. Terry Frye
In memory of Larry
and Mary Finch

Mr. and Mrs. Benjamin Hutley

Mr. and Mrs. Peter Johnson

Mrs. Nancy Jorgesen

Ms. Cynthia Korsmeyer

Mrs. Shirley Briney Kost
In memory of David
and Rose Dean

Mr. and Mrs. Michael Leahy

Mr. Michael B. Myers

Moreland and Devitt, Inc.

Mrs. Rosanne Ray

Mr. and Mrs. Gregg Roegge

Rushville State Bank

Rushville State Bank Trust Department

Ms. Donna Sargent

Mr. and Mrs. Harold Sargent

Mrs. Barb Schoonover
In memory of Rod Schoonover

Mr. and Mrs. Barry Settles

Mrs. Mary Shenaut
In memory of Ernest
and Bess Daly

Mrs. Donna Smith

Mr. and Mrs. Merlin Southerlan
In memory of Ray
and Ruth Loring

Mrs. Dianne Snyder
In memory of Dr. Russell Dohner

Mr. and Mrs. Kelly Stambaugh
In memory of Luan Phillips

Mr. and Mrs. Mike Stauffer
In memory of Frank and Rosalee
Kotter & Bob and Nancy Stauffer

Mr. and Mrs. Gene Strode

Mr. and Mrs. Robert Strong
In memory of Phillip Brown

Mr. and Mrs. John Sullivan

Mrs. Pam Tavernier

Ms. Nancy Toland

Mr. and Mrs. Bide Thomas

Mr. and Mrs. Jon Thurman
In memory of Luan Phillips

Tracy Family Foundation

Mr. and Mrs. John Tribbey

Mr. Daniel Wagner

Mrs. Bonnie Wells
In memory of Dale Wells

Mr. and Mrs. Bill Worthington

Mr. and Mrs. Jim Worthington
In honor of the Culbertson Staff
Y&N Insurance Agency

Mr. and Mrs. Larry Young
In memory of Vicky Reedy

IN MEMORY OF KAY VIRGINIA

Mrs. Charlotte Cowser

ESTATE OF MARY CAROL HUGHES

IN MEMORY OF STACEY STRODE, RN, WOUND CARE SPECIALIST

Mr. and Mrs. Gene Strode

2026 – 2027 ANNUAL CAMPAIGN

Dr. and Mrs. S.K. Kanthilal

OUTPATIENT SPECIALTY CLINICS

Specialty Care, Close to Home

At Sarah D. Culbertson Memorial Hospital, we're proud to bring specialty care directly to our community. Each week, medical specialists from Quincy, Springfield, and Macomb travel to our Outpatient Specialty Clinic, helping patients access advanced care without leaving the area.

Many of our outpatient specialists require a referral from your primary care provider. To learn more or schedule an appointment, contact our Patient Access Department at (217) 322-5271.



Silvan Omerovic, DO
(Prairie Cardiovascular)
Wednesdays & 4th Friday



Meredith Flemming, FNP
(Prairie Cardiovascular)
Wednesdays & 4th Friday



Elizabeth Lawler, APRN
(Prairie Cardiovascular)
Wednesdays & 4th Friday



Jeffrey Goldstein, MD
1st and 3rd Mondays

Cardiology

What it is:

Focuses on diagnosing and treating heart and vascular conditions

Services include:

ABI testing, cardiac stress tests, echocardiograms, EKGs, heart monitors, carotid ultrasound/CTA, and CT angiography

Providers & Schedule:

At left

Endocrinology

What it is:

Treatment of hormone-related conditions such as diabetes, thyroid disorders, and metabolic issues

Provider & Schedule:



Luke Ellerman, MSN, APRN
(Quincy Medical Group)
1st, 2nd, & 3rd Fridays



John Bozdech, MD
1st & 3rd Fridays



Adam Niemann, MD
2nd & 4th Fridays



James Thiele, MD
2nd Tuesday
(screening colonoscopies)

Gastroenterology

What it is:

Digestive system care, including treating conditions of the esophagus, stomach, and intestines

Services include:

Colonoscopy, EGD, EMR, esophageal dilation, and sigmoidoscopy

Providers & Schedule:

At left

Hematology – Oncology

What it is:

Diagnosis and treatment of blood disorders and cancer

Services include:

Chemotherapy, infusions, injections, immunotherapy, and IV antibiotics

Providers & Schedule:



Christian Khoury, MD
(Quincy Medical Group)
Every Tuesday;
2nd & 4th Thursdays



Todd Petty, MD
1st & 3rd Tuesdays



Eric High, MD
1st Tuesday

General Surgery

What it is:

Surgical care for a wide range of conditions, often minimally invasive

Services include:

Hernia repair, gallbladder removal, biopsies, mass excisions, port placement, and more

Providers & Schedule:

At left



Raymond Smith, MD
(Quincy Medical Group)
Every Tuesday;
2nd & 4th Thursdays

Comprehensive Kidney, Hypertension, & Diabetes Clinic

What it is:

Specialized care for kidney disease, high blood pressure, and diabetes management

Services include:

Blood pressure monitoring interpretation and self-monitoring guidance

Provider & Schedule:



Carlos Urdininea Kirkwood, MD
1st Friday

Gynecology (GYN)

What it is:

Women's reproductive healthcare

Services include:

Biopsies, hysterectomy, IUD services, and tubal ligation

Provider & Schedule:



Toni Quinn, MD
3rd Monday

Infectious Disease

What it is:

Care for complex infections and immune-related conditions

Provider & Schedule:



Hala Saad, MD
1st Thursday

Neurology

What it is:

Treatment of brain and nervous system conditions

Services include:

Botox injections for chronic migraines

Provider & Schedule:



Daniel Kimple, MD
2nd & 3rd Tuesdays

Otolaryngology (ENT)

What it is:

Ear, nose, and throat care

Services include:

Tonsil/adenoid procedures, ear tubes, and foreign body removal

Provider & Schedule:



Mary Doellman, DO
2nd & 4th Wednesdays

Podiatry

What it is:

Foot and ankle care

Services include:

Diabetic foot care, bunionectomy, fracture care, ingrown toenails, and wart treatment

Provider & Schedule:



Amanda Holcomb, DPM
1st Wednesday

Wound Care

What it is:

Specialized treatment for chronic and non-healing wounds

Providers & Schedule:



Eli Goodman, MD
Every Monday & Thursday



Dr. Charles Sheaff
Every Monday & Thursday

Vascular Surgery

What it is:

Treatment of blood vessel conditions

Provider & Schedule:



Stephen Ryan, MD
4th Tuesday

Pulmonology

What it is:

Lung and respiratory care

Services include:

Pulmonary function testing

Provider & Schedule:



Elie Chbeir, MD
2nd & 4th Mondays

Orthopedics

What it is:

Care for bones, joints, and muscles

Services include:

Spinal care, steroid injections, and hand procedures (carpal tunnel, trigger finger, cyst removal)

Providers & Schedule:



William Payne, MD
2nd Friday (ortho spine only)



Drake White, MD
First Monday

Urology

What it is:

Care for urinary tract and male reproductive health

Provider & Schedule:



Matthew Knudson, MD
2nd, 3rd, &
4th Thursdays

Your health matters — access to expert care shouldn't require long travel. Culbertson Memorial Hospital is committed to bringing specialty services to our community, making it easier for you to get the care you need close to home.

GET TO KNOW YOUR PROVIDERS!

Dr. Kerstin Stitt, DO

Rushville Family Practice

Dr. Kerstin Stitt has been caring for patients at Rushville Family Practice for over three years, bringing a thoughtful, patient-centered approach rooted in both curiosity and connection.

A Curiosity for Care

Dr. Stitt's journey into medicine began with a natural curiosity and a desire to work closely with people. She has always been interested in understanding the "why" behind how the body works and how healthcare is delivered. **That curiosity continues to shape how she approaches patient care today.**

A Holistic Approach

As a Doctor of Osteopathic Medicine (DO), Dr. Stitt believes the body functions as a connected whole rather than separate parts. This philosophy guides her approach to care, emphasizing not only treatment but understanding the full picture of a patient's health. Her additional training in the musculoskeletal system includes emphasis on injury assessment, physical therapy techniques, and alternative pain management.

Committed to Rural Healthcare

Coming from a rural community herself, Dr. Stitt feels a strong connection to the patients she serves. She values the close relationships that develop over time and the opportunity to care for entire families.

"In rural healthcare, you get to truly know your patients. Being broadly trained allows me to take care of many different needs, and that's both a challenge and a reward."

– Dr. Kerstin Stitt, DO

Focused on Prevention

Dr. Stitt is especially passionate about prevention and early detection. She works closely with patients to help them stay ahead of potential health concerns and emphasizes the importance of being prepared and proactive when it comes to health.

A Collaborative Experience

Patients visiting Dr. Stitt can expect a team-oriented approach to care. She believes strongly in involving patients in decisions through open conversation, ensuring each care plan reflects their needs and goals. She also encourages patients to be proactive about their health: If something new arises, addressing concerns early can make a significant difference.

Rooted in Community

For Dr. Stitt, being part of the Rushville community is deeply meaningful.

"This community has a long history of taking care of each other. It is an honor to be part of that."

– Dr. Kerstin Stitt, DO

To schedule an appointment with Dr. Stitt, call Rushville Family Practice at (217) 322-3345.

