



100 YEARS OF CARE

Sarah D. Culbertson Commemorative
2020 Annual Report





Dr. Frederick Culbertson

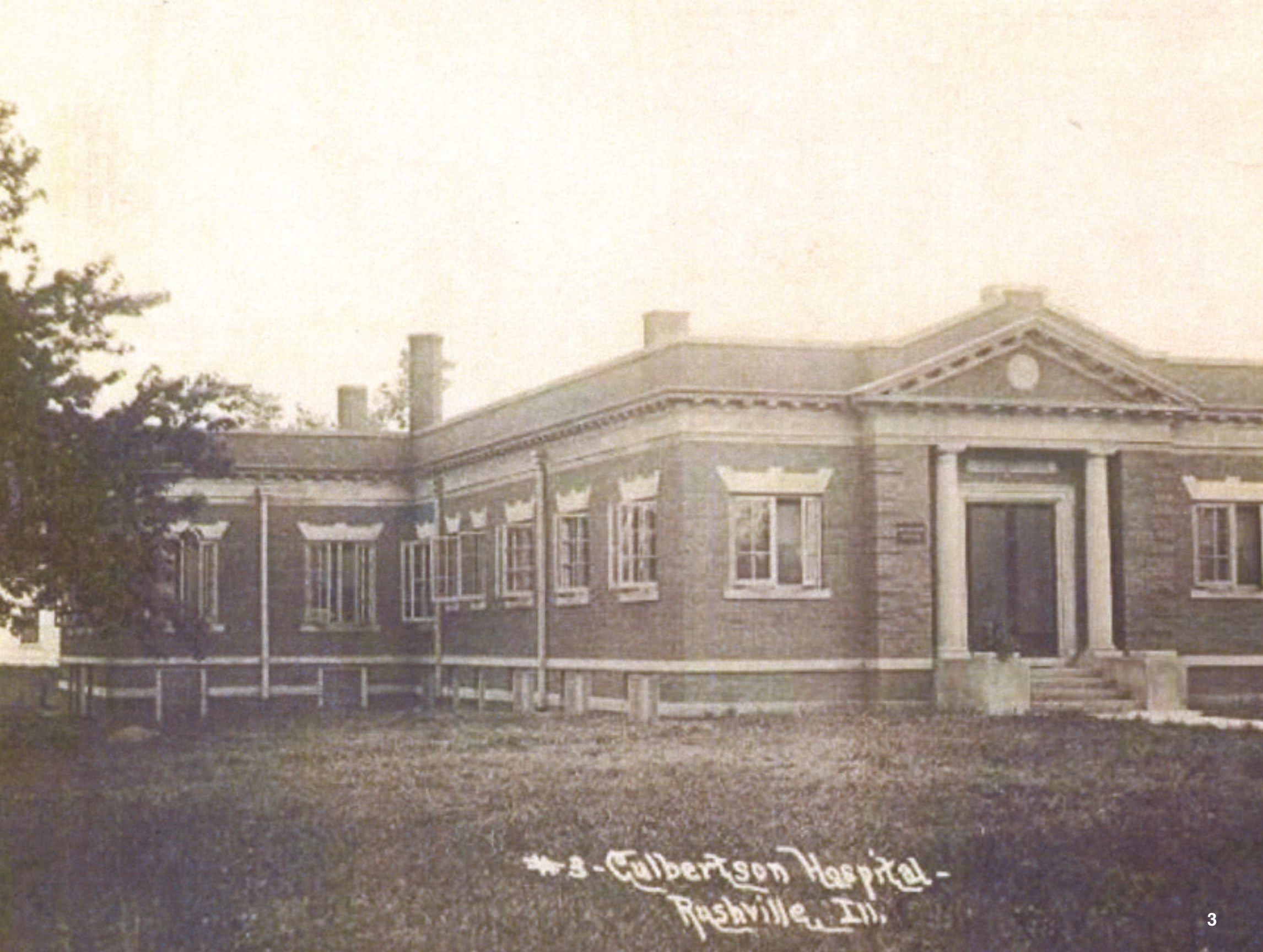


Sarah D. Culbertson



Serving the Community **Yesterday, Today & Tomorrow**

When Dr. Frederick Culbertson and Sarah D. Culbertson established their Rushville hospital on February 15, 1921, they did so with one goal in mind — to provide quality, compassionate healthcare in a rural setting. Now 100 years later, we at Sarah D. Culbertson Memorial Hospital strive to carry on their legacy and their mission by providing the same care and comfort to the community the Culbertsons loved so much. In this report, you will learn more about the storied history of accomplishments, in addition to details on our Master Facility Plan that will define our continuous facility and service improvements for years to come. The next step in our journey has only just begun.



#3 - Culbertson Hospital -
Nashville, Tenn.

Dear Friends of Culbertson Memorial Hospital,



John Kessler
Chief Executive Officer
Sarah D. Culbertson
Memorial Hospital

The service of Sarah D. Culbertson Memorial Hospital has been an ongoing evolution from the day the doors opened in 1921. We have grown and adapted to the changes in healthcare in recent decades and are committed to the legacy started by Dr. Frederick and Sarah D. Culbertson. The amount of teamwork the Culbertson staff has shown this past year proves that even during uncertain times, we can overcome anything by working together. As difficult as things have become and as taxing as the current environment has been for our staff and providers, they all continue to do their jobs regardless of the challenges.

As we look into the future, the Master Facility Plan — recently approved by the Board of Directors — will allow us to make exciting improvements to our facility and give us the ability to continue providing compassionate healthcare. Over the past several months, we have learned where some of our vulnerabilities lie. Through the master facility project, we can turn our vulnerabilities into opportunities and improve how healthcare is delivered in Schuyler County and the surrounding area. The expansion project will significantly improve the way we serve our patients, from how they access our campus to how our clinicians can deliver care every day. As we celebrate our 100th Anniversary February 15, 2021, this project is the next step in helping us care for you and your family for the next 100 years.

As the healthcare needs of our community have changed over the last decade, more and more services have been pushed to the outpatient environment. While we are decreasing the number of inpatient beds, we feel other changes are truly what this community needs from Culbertson Memorial Hospital moving forward. We also believe this project will grant us the opportunity to upgrade our Med-Surg patient rooms to allow for Private and Semi-Private patient rooms. These new patient rooms will be consistent with the accommodations you see in newer hospitals today, will be much more comfortable for patients, and will create an effective healing environment.

The fact that we are still here 100 years later and that we are committing a significant investment into the facility shows the level of commitment that the community and hospital have shared from the beginning. As we celebrate 100 years of providing compassionate healthcare to the community, we look forward to continuing that mission into another century. We live and breathe this community — just like you. At Culbertson Memorial Hospital, we Empower Your Health and Healing, and we will continue to do so for many more years to come.

Sincerely,

A handwritten signature in black ink that reads "John Kessler". The signature is fluid and cursive, with the first name "John" being more prominent and the last name "Kessler" following in a similar style.

John Kessler
Chief Executive Officer
Sarah D. Culbertson Memorial Hospital



A HISTORY OF EXCELLENCE



1910

Dr. Frederick Culbertson begins practicing medicine in Rushville.

1948

Schuyler County Hospital Authority holds its inaugural meeting and introduces plans to expand the existing hospital building into a 50-bed facility.

1950

Sarah D. Culbertson Memorial Hospital is organized as a District Operated Hospital and is given the legal name Schuyler County Hospital District.



1955

Dr. Russell Dohner begins practicing in Rushville. Through the years, Dohner will become famous for charging just \$5 per visit and for delivering an estimated 3,500 babies.

1980

The hospital adds new Lab and Radiology departments.

1985

The Health Facilities Planning Board approves an application to convert 20 beds to Long-Term Care.

1984

Lifeline, a personal emergency response program, becomes available through Culbertson for the handicapped and elderly.

1986

The 6,000-square-foot Medical Arts Building is completed and opened to the public.

1970

The west wing addition opens as Culbertson totals 80 beds in an effort to attract more specialists to the rural hospital.

1953

The first expansion to Culbertson Memorial Hospital is completed and opens to the public. The addition adds 26 beds for a grand total of 50 beds, plus OR and OB departments.

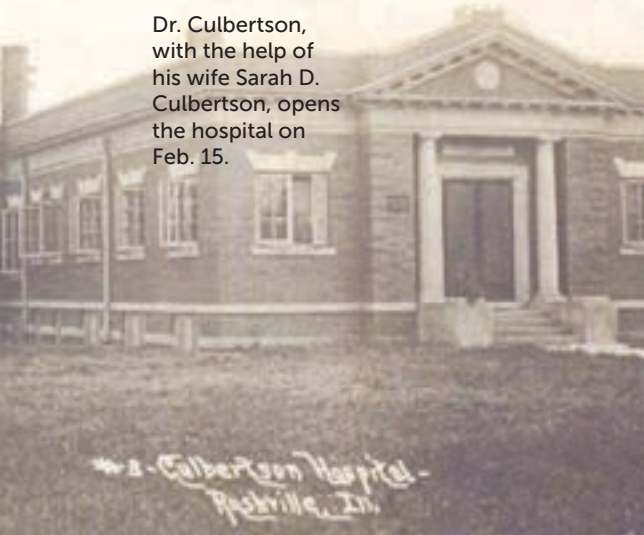
1949

Upon his death, Dr. Culbertson wills the hospital to the people of Schuyler County on the condition they rename it in honor of his wife.



1921

Dr. Culbertson, with the help of his wife Sarah D. Culbertson, opens the hospital on Feb. 15.





CMH Closer to Critical Access Designation

By PAT GRATE
Culbertson Memorial Hospital is one step closer to reaching its goal of achieving status as a critical access hospital.

CMH was notified that it had been designated a "necessary provider of health care services" by the state, in an announcement made last week by interim administrator David Sniff.

He said that the next step in the process is to ask the Illinois Department of Public Health to perform a life safety code and physical plant survey, and that the letter has been sent making this request.

Once this survey is complete, IDPH will send a report to the hospital with a corrective action plan. CMH will also need to request a nursing survey, and receive a corrective action plan.

According to Sniff, there are four other hospitals in the state who started the CAH designation process before Culbertson. Due to staff cutbacks, the inspections of these hospitals are running behind schedule, he said.

"We have asked to be moved up in the queue, due to our current financial situation," Sniff said. "But I don't know whether that will have an effect or not."

According to a fact sheet from the Illinois Department of Public Health, a critical access hospital is an opportunity for small, rural hospitals

to increase revenues through cost-based reimbursement from Medicare and to have a greater flexibility in their delivery of services.

The hospital will essentially provide the same services and function under the same hospital licensure standards and Medicare Conditions of Participation. The hospital must provide 24-hour emergency services, inpatient services.

Most be a patient percent more have to outpatient reimbursement becomes a

tags to these hospitals.

A report compiled last year showed that Culbertson has a combined Medicare/Medicaid



2021

Sarah D. Culbertson Memorial Hospital celebrates its 100th anniversary.

1990

The hospital receives a federal grant of \$50,000 for each of the following three years to establish a new clinic in Beardstown.

1998

Culbertson Gardens, a 23-unit apartment building for active seniors, opens in Rushville.

2001

Therapy Services moves from a contracted service to an in-house Therapy Department offering Occupational Therapy, Physical Therapy and Speech Therapy.

2004

Culbertson Memorial Hospital Designated as a Critical Access Hospital.

2007

A volunteer program, Friends of Culbertson Memorial Hospital, is formed.

2011

The 9,500-square-foot Elmer Hugh Taylor Clinic opens in Beardstown.

1996

Culbertson opens its new Outpatient Clinic.



2000

Culbertson Memorial Hospital joins the digital age with the launch of its website, cmhospitals.com.

2002

The hospital opens Beardstown Clinic II.



2005

First Culbertson Memorial Hospital Foundation Dr. Russell Dohner Golf Outing held.

2009

Wound Clinic opens at Culbertson, in partnership with Passavant Area Hospital Wound Center.



2013

Dr. Dohner retires after 58 years of service to the community.



Our Commitment to every family.



At a time when many rural communities in the U.S. have little or no access to local healthcare, Sarah D. Culbertson Memorial Hospital maintains an expert medical staff consisting of physicians, physician assistants, nurse practitioners and a pediatric nurse practitioner. Additionally, a growing number of regional specialty physicians commute to our facilities in Rushville and Beardstown each week to offer their expertise in the fields of Cardiology, Gastroenterology, Oncology, Pulmonology, Urology and more.

STANDARDS OF EXCELLENCE

Culbertson Memorial Hospital pledges to consistently maintain the high standards of quality you deserve. Therefore, we promise to practice and adhere to the following Culbertson Standards of Excellence:

Excellent Customer Service & Positive Communication

- We will be customer-focused at all times. We want you to know that you are our #1 priority and that we are here to serve in a positive and memorable way.
- We will be respectful to our co-workers. We are always willing to assist to the best of our abilities when help is needed with a positive attitude.
- We will follow through on all of our promises and commitments until the concern is resolved or delegated to the appropriate person:
 - Use the 6-foot rule.
 - Introduce ourselves and educate customers about our procedures, services and wait times.
 - Ask, "Is there anything else that I can do for you?" Always thank you for choosing Culbertson.

Professionalism & Appearance

- We will remember we never have a second chance to make a first impression.
- We will be mindful that our actions and appearance are viewed by customers at all times.
- We will not gossip or use offensive language.
- We will refrain from personal use of electronic devices in customer areas.



- We will wear our ID badges in a visible location at all times.

Commitment, Competency & Accountability

- We will perform all duties in a timely manner, completely and independently.
- We accept responsibility for our own actions — never assigning blame to others, making excuses or failing to do the right thing.
- We will understand, "That's not my job," and, "I don't have time," do not demonstrate excellence and are not acceptable excuses.
- We will contribute to the safety and security of all Culbertson facilities by following policies and procedures.
- We will attend semi-annual employee meetings and quarterly clinic meetings.

Teamwork

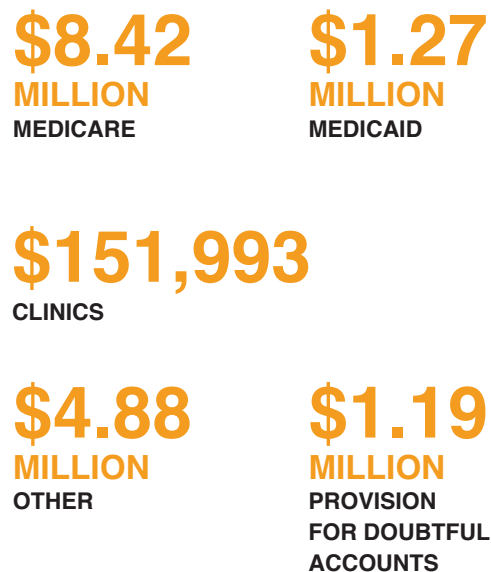
- We will be respectful, supportive and flexible.
- We will recognize that our responsibility does not end when our co-workers' shift begins.
- We will lead by example, keep our word, be honest and honor commitments at all times.
- We understand that teamwork is critical to the successful operation of the hospital.
- We will welcome, teach and mentor new employees.

It is our goal to achieve superior customer service with every customer, every time, always.

FY2020 REVENUES & EXPENSES

The Schuyler County Hospital District spent a total of \$23.02 million in the 2020 fiscal year.

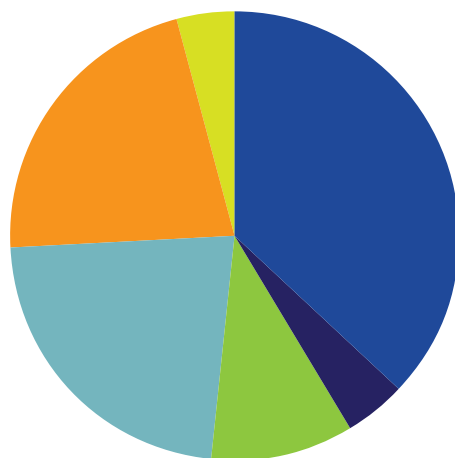
REVENUE BY PAYOR



PATIENT SERVICE REVENUE BREAKDOWN



OPERATING EXPENSES



Income from patient service revenue came in slightly under the hospital's operating expenses. After factoring in \$15.92 million in insurance revenue, net revenue was \$21.39 million.

SALARIES AND WAGES	\$8.53 MILLION	37.07%
EMPLOYEE PENSIONS	\$1.01 MILLION	4.38%
OTHER EMPLOYEE BENEFITS	\$2.35 MILLION	10.21%
SUPPLIES AND OTHER	\$5.24 MILLION	22.74%
PURCHASED SERVICES AND PROFESSIONAL FEES	\$4.94 MILLION	21.45%
DEPRECIATION AND AMORTIZATION.....	\$955,060	4.15%



COMMITTED TO THE COMMUNITY

For 100 years, Culbertson Memorial Hospital has been committed to not only providing quality healthcare but supporting the needs of the community. Throughout the 2020 calendar year, Culbertson Memorial Hospital Clinics served 498 new patients and had a total of 6,089 patient encounters.

PATIENT VOLUME:

Patient volume (i.e., the number of billable services or treatments) for the 2020 calendar year has been broken down in the following departments:

CARDIAC REHAB	436
EMERGENCY ROOM	2,915
ENDOCRINOLOGY	150
GASTROENTEROLOGY	492
NEUROLOGY	83
ONCOLOGY	694
PULMONOLOGY	154
PULMONARY REHAB	29
SENIOR LIFE SOLUTIONS	531
SURGERIES	197
WOUND CLINIC	685
UROLOGY	181
PHYSICAL THERAPY	3,178
OCCUPATIONAL THERAPY	1,297
SPEECH THERAPY	709
LABORATORY TESTS	57,155
IMAGING TESTS	6,347

INPATIENT STATISTICS:

In total, 281 patients were treated in inpatient care in 2020. Here's how those numbers break down:

INPATIENT

105
PATIENTS



AVERAGE
LENGTH OF STAY

SWINGBED

46
PATIENTS



AVERAGE
LENGTH OF STAY

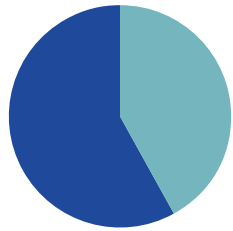
OBSERVATIONS

170
PATIENTS

ECONOMIC DRIVER:

In 2020, the Illinois Health and Hospital Association developed a report on Culbertson's economic impact on the community.

368 JOBS SUPPORTING WORKING FAMILIES



152 DIRECT
215 INDIRECT

\$53.1 MILLION
INFUSED INTO LOCAL ECONOMY

PAYROLL – \$27,431,735

SUPPLIES – \$24,189,259

CAPITAL – \$1,455,028

COMMUNITY SERVICES:

In 2020, Culbertson Memorial Hospital Foundation handed out 11 scholarships in the amount of \$5,300 to local students. In addition, the hospital provided the following community services:

- COMMUNITY HEALTH SCREENINGS
- SPORTS PHYSICALS FOR STUDENT ATHLETES
- SENIOR CITIZEN OUTREACH
- STROKE SUPPORT GROUP
- CAR SEAT SAFETY CHECKS
- AMERICAN RED CROSS BLOOD DRIVES
- MOBILE MEALS





CULBERTSON MEMORIAL HOSPITAL FOUNDATION

PLAYING A PIVOTAL ROLE
IN THE FIRST 100 YEARS
AND THE NEXT.

Through charitable donations and fundraising, Culbertson Memorial Hospital Foundation is able to spread the Culbertson mission far beyond the hospital walls and better enrich the lives of patients and residents in and around Schuyler County.

Culbertson Memorial Hospital Foundation greatly appreciates any and all gifts that help support its mission. The Foundation board exercises sound judgment in its stewardship responsibilities and assures donors their gifts will be used exclusively for their designated purposes. Our organization maintains a wide array of funds to choose from or you can directly support a specific department within the hospital.

Annual Campaign Fund

With your support, Culbertson Memorial Hospital Foundation will continue its legacy of providing the hospital with the latest advanced technology. Each year in November, we select a new clinical equipment project and run a three-month Annual Campaign from December to February. In 2020, the Foundation raised funds for the acquisition of brand new, state-of-the-art VersaCare™ Med Surg Beds, which are specially designed to benefit both patients and Culbertson health providers.

Memorial or Honorarium

The Foundation gratefully recognizes contributions given in memory or honor of a special person or event. We acknowledge your tribute to loved ones with a note to family members informing them of your thoughtfulness. In addition, gifts totaling \$500 or more are acknowledged with a plaque on our donor wall in the name of the memorialized or honored person.



Sarah's Society (Bequests & Estates)

Sarah's Society was established to recognize, honor and thank those who support Culbertson Memorial Hospital Foundation through bequests and estates — a gift that costs nothing during the donor's lifetime. Those honored as members of Sarah's Society are recognized in a special display at the hospital (unless donor wishes to remain anonymous).

Education Funds for Health Profession Scholarships

A shortage of qualified healthcare professionals — particularly in rural communities — is a growing problem. One of the best ways to assure a steady, well-educated workforce is to encourage people to enter a healthcare field through scholarship programs. Your gift will keep that tradition going.

- Scholarships are given annually by the **Elmer Hugh Taylor Health Profession Scholarship Fund** — open to area high school seniors or college students who reside in the Culbertson Memorial Hospital service area of Schuyler, Brown, Cass, and south Fulton counties and who are entering a health-related field of study.
- Additional scholarships are given by the **Regina Erhardt Scholarship Fund** — awarded to any Rushville-Industry High School or Brown County High School graduate attending school for a health-related field of study.

Funds raised from our Annual Chicken Noodle Dinner in November support the employee scholarship program. To support, attend the event or make an individual donation to the program.

Applications for any of the scholarship programs are available from the offices of career counselors in area high schools or can be downloaded at cmhospital.com.

Culbertson Memorial Hospital Foundation Board of Directors

Wayne Crum, President
David Osmer, Vice President
Debbie Worthington, Treasurer
Bonnie Billingsley
Mark Dohner
Dave Hester
Bob Jones
Kay Miller
Garry Moreland
Mark Read
Donna Sargent
Lynn Stambaugh
Lydia Tolle
Chris Trone
Tim Woodward



POWERFUL SUPPORT FOR GENERATIONS



Excellent Care Right at Home

Wayne and Kay Crum

Well-respected in the community and active in their church, both Wayne and Kay Crum share a strong belief in the benefits of a local hospital and its importance to Rushville and surrounding communities. Both retired teachers, Wayne is also a lifelong farmer raising Hereford cattle, which the Crums are very proud of! Wayne also had a successful career as a high school football coach with a winning record, and also as an IHSA official in football and basketball, working state finals in football. Today, Wayne serves as President of the Culbertson Memorial Foundation.

“Culbertson Memorial is very important in our lives. Wayne goes to a cardiologist (from Springfield) who sees patients here once a month. I had a sonogram here. We receive care by specialists without a long drive — excellent care right at home. We support our local hospital for all it’s done for us and others. Many folks have had their lives saved by the comprehensive services here.”

— Kay Crum, Rushville, IL

Our community is so fortunate to have Culbertson

Ronnie and Carol Greer

Growing up as high school sweethearts, Ronnie Greer and his wife Carol would eventually spend their life together farming and raising livestock in Littleton, IL. From the time he was a little boy, Ronnie loved horses, buying and selling Quarter horses, Belgian draft horses and Standardbred harness horses throughout his adult life. Ronnie also served on the Schuyler County Fair Board for over 30 years and was superintendent of the Draft Horse Shows. The Greers retired from farming in 2004. When Ronnie was diagnosed with Alzheimer’s disease in 2012, they moved to Rushville to be closer to family and friends.

Ronnie passed away in September of 2019. Memorials by family and friends in his honor went to the Culbertson Memorial Hospital Foundation.

“When deciding on a memorial, we wanted to support our church in Littleton and also give back to Rushville where we have many family and friends. Our daughter, Rhonda (Briney), has worked at Culbertson Hospital the past two-and-a-half years as an RN supervisor and was influential in our decision to give Ronnie’s memorial to the Foundation. Our community is so fortunate to have Culbertson.”

— Carol Greer, Rushville, IL





A Great Benefit for Rushville

Harold and Norma Smith

Harold Smith served many years as the Schuyler County Treasurer. Norma Smith worked as an Administrative Assistant at Culbertson Memorial Hospital for just over 13 years, retiring in 1990. In 2005, Harold was instrumental in the creation of the first Dr. Russell R. Dohner Memorial Golf Outing, which he chaired for many years. His original goal was to raise \$5,000 for the hospital, which was struggling financially at that time. The event now grosses over \$40,000 annually in one day because of Harold and Norma's efforts in bringing this event to life. In fact, Harold's leadership — with Norma by his side year after year — resulted in the 2019 Foundation Golf Outing being one of the largest dollar Foundation events of the year. After Harold's passing in 2016, memorials were left to the Foundation to benefit the Foundation Golf Outing. Harold and Norma have been — and Norma continues to be — tremendous advocates of Culbertson Memorial Hospital.

"Harold and I always felt very fortunate to live in a small community that offered so much. Culbertson Memorial Hospital is one of those assets, a great benefit for Rushville and surrounding communities, offering many services and employment opportunities. Throughout my lifetime, I will continue to support it and encourage others to do so as well."

— **Norma Smith, Rushville, IL**

Honoring life and legacy

Bob and Becky Jones

Rushville natives Bob and Becky Jones are well-respected in the community and were instrumental in the planning for construction of the new Rushville community pool. Bob serves on the board for the Rushville Fitness and Community Center, which was completed in the spring of 2020. Bob recently retired after a successful career as an attorney in Rushville. Bob and Becky are also fitness instructors certified in several fitness disciplines. Bob credits Becky as the big driver and motivator for both of them giving back to the community. Bob also serves as a board member of the Culbertson Memorial Foundation.

In the spring of 2019, Bob was diagnosed with esophagus cancer. He credits the doctors and the Sarah D. Culbertson Memorial Hospital oncology department for helping save his life. 2019 was a very difficult time for Bob, with major surgery at Barnes in St. Louis, but he has made a full recovery.

"It's always sad when we lose a member of our community, but at the same time it's gratifying when we see that the family of the deceased has designated Culbertson Memorial Foundation for a memorial gift. The Foundation then makes a gift that not only honors the legacy of the deceased, but also makes the gift with confidence that it will benefit a multitude of people for years to come."

— **Bob Jones, Rushville, IL**



A SMALL TEAM THAT MAKES A BIG IMPACT



Culbertson is personal healthcare

Dan Wise
IT Manager

Culbertson is personal healthcare. Living in a small community, you get acquainted with a lot of people and you develop relationships. When someone walks through the doors it's not just a patient — it's someone you know, it's someone you already care about and we can relate to their needs on that personal level. I love the community of people. I enjoy the relationships I have built in my 20 years here. Having a job in a community that I live in that offers competitive pay without the commute is pretty awesome.

Culbertson is kind of my family business. I am a third-generation employee. I had one grandparent and both my parents who worked here, along with most of my siblings. Culbertson has been a big part of my life. I remember growing up coming to the hospital to find one of my parents to get money to take to the swimming pool. When I would walk in, almost all of the people working I would come in contact with knew who I was. They would say "hi" and if they had time take a couple minutes to talk to me. It really felt like extended family because it seemed they knew more about

me than I did. I do remember one time when I was in junior high, I was in the hospital for a week and one of the employees found out I liked marshmallow malts from Dairy Queen. So, they brought one in for me. It's that kind of personal touch for our patients I still see today. Even if it's just setting up a table for a patient so they can celebrate their 74th anniversary with their spouse. Culbertson is a community of caring.

Culbertson is a huge part of this community. It allows our family, friends and neighbors an opportunity to receive quality care without having to travel an hour or more away. To be a part of something that serves this community in such a big way is humbling. Personally, to work for a operation that my parents did and still impacts the community the way it does is truly a blessing.

A Small Hometown Feeling

Carrie Skiles
Director of Health Information Management
Privacy and Compliance Officer

Culbertson Memorial Hospital has a wide variety of healthcare services, but they are delivered with a small hometown feeling and without having to drive long distances. Our staff work very hard to make sure that patients are well cared for and that their needs are met. We treat patients as we would treat our own loved ones. We are very fortunate to have knowledgeable and compassionate staff working at Culbertson. I love getting to work with co-workers who want to make a difference in our patients' lives and in our community.

Our community is very important to me. I was born and raised here and am very blessed to be able to raise my own family and to be involved in organizations within this community. We have so many wonderful assets in Schuyler County, including Culbertson Memorial Hospital. The hospital makes a huge impact in our community because people have access to a variety of healthcare services right in our own backyard. It gives me peace of mind knowing that if someone in our community or the surrounding areas needs medical care, we can receive it without having to drive a long distance. I also love that I am employed by my hometown hospital and get to work every day to serve my fellow neighbors in our community.



Working hard to improve and provide exceptional care



Jessica Hendricks
Prior Authorization Specialist

Culbertson's commitment to community and hometown values sets it apart from other healthcare providers. We are always working hard to improve and provide exceptional care to not only our community, but to surrounding communities as well. The thing I like most about working at Culbertson is that we are a team. Everyone works together to make sure that anyone who enters our doors can get the best care possible.

There are so many wonderful things I have experienced during my time here. From being able to witness the care and dedication that Dr. Dohner had to helping Dr. Cox perform one of his magic tricks for a patient (even though it meant I learned his secret). On a personal level, my mom was a RN in the ER and my dad was a paramedic. Watching them in action and doing what they loved to do gave me a whole new level of respect and pride for them. I have also met several people along the way that have become lifelong friends.

I have come in contact with so many people from the community, whether they are family members, friends or total strangers. To know that I may have played a small part in making a difference in their lives is an honor.

Many lives are helped and saved every day

Christina Hardy, BSN, RN
Director of QI/RM/Safety/Employee Health

Sarah D. Culbertson Memorial Hospital is a smalltown patient- and family-oriented facility. The staff are friendly and treat you like family. Staff put their feet on the ground and work as a team in order to get things done.

As a little girl I would occasionally come to the hospital to see my mom while she was on break time. The dietary staff would always have chocolate chip cookies that they would give my sister and me. This kind gesture made our day. Conversations with Dr. Dohner are a favorite pastime. A few times my family needed to be cared for by the staff at Culbertson and the staff was always focused and so kind. They allowed my mom and sister to stay with my grandfather during his end of life. That gesture meant so much to my family.

It is a humbling experience to be able to be a part of the Culbertson team. I was born at Culbertson and my mom dedicated 36-and-a-half years of service to Culbertson, so I have practically been raised by this wonderful facility in our community. In April 2021, I will have dedicated 20 years of service to Sarah D. Culbertson Memorial Hospital. Oftentimes I hear Culbertson called a Band-Aid station and I would have to disagree with those individuals. Many lives are helped and saved everyday within the walls of Sarah D. Culbertson Memorial Hospital.



LOOKING AHEAD

In November 2020, the Culbertson Memorial Hospital Board of Directors approved a \$15.4 million Master Facility Plan to renovate the interior of the hospital.

Specific plans for the renovation include:

- Significant expansion and renovation of the hospital's 42-year-old Emergency Department
- Centrally locating and expanding Laboratory Services
- The creation of a Cancer Center
- Expansion of the Outpatient Specialty Clinics
- Privatization of patient rooms and expansion of Surgical Services
- Convert the hospital to a 100% sprinkled facility for fire safety

The renovation, broken into six phases, is planned to begin in July 2021 and finish in February 2027, just in time for the hospital's 106th anniversary.

PHASES 1 & 2

WEST WING RENOVATION LABORATORY SERVICES, MAIN ENTRANCE & PATIENT ACCESS

PHASE 1: West Wing Renovation

The first phase of the renovation, set to begin in July 2021, includes the creation of five Outpatient Specialty Clinic care areas and expansion of Cardiac-Rehab. This phase will also see the creation of a brand new Cancer Center with private and semi-private treatment rooms, plus a dedicated Patient Access Area and Waiting Rooms.

PHASE 2: Laboratory Services, Main Entrance & Patient Access

The second phase of the renovation plan will centrally locate and expand Laboratory Services and create a new main entrance to the hospital. Additionally, Phase 2 will also see a renovated main waiting area, plus a brand new Patient Access Area.



*Phase 2 Rendering
Reception
Waiting Room*



PHASES 3 & 4

EMERGENCY DEPARTMENT EXPANSION & IMAGING CENTRALIZATION

PHASE 3: Emergency Department Expansion

During Phase 3, a dedicated Trauma Room built for isolation patients will be created, and treatment rooms will be expanded from four to five. Phase 5 will also create a centrally located nursing station and give the hospital the capability of having negative pressure rooms.

PHASE 4: Imaging Centralization

The fourth phase of the renovation plan will allow all testing for Imaging to be completed within the Imaging Department, which previously had testing sites located throughout the hospital.



*Phase 3 Rendering
ER Nurse's Station*



*Phase 5 Rendering
Patient Room*

PHASES 5 & 6

PATIENT WING & SURGICAL SERVICES EXPANSION

PHASE 5: Patient Wing

The penultimate phase of the plan will renovate nine patient rooms so each room has its own toilet, sink and shower. Patient beds will be decreased from 22 to 12 by creating six private patient rooms and three semi-private patient rooms. Phase 5 will also establish a dedicated staff lounge and staff training area.

PHASE 6: Surgical Services Expansion

Finally, Phase 6 of the plan will build two new Surgical suites and one scope room and establish a four-bed Post Anesthesia Care Unit (PACU) unit. In addition, six pre-procedure patient bays will be created along with a centrally located nursing desk.

OUR PROVIDERS

For 100 years, Sarah D. Culbertson Memorial Hospital has cared for the citizens of Schuyler, Brown, Cass and southern Fulton Counties. Culbertson has made a commitment to improve local healthcare services so our area residents can receive quality care close to home. In the last few years, the hospital has invested in state-of-the-art services such as 3D Mammography and a patient-friendly MRI service. The hospital also added a Hospitalist program, in-house Sleep Lab, a Geriatric Behavioral Health program, privatized the surgical suite patient rooms, as well as poured more resources into Speech, Occupational and Physical Therapy services. The coming expansion project is just another shining example of our commitment to the communities we serve.



**Cindy Chaffin, FNP-C FPA
Primary Care**



**Courtney Elliott, CPNP-PC
Pediatrics**



**Alexis Murk, DNP-FNP
Primary Care**



**Amber Rector, PA-C
Primary Care**



**Cathy Rigg, LCSW
Counseling Services**



**Sarah Roegge, APRN
Primary Care**



**Betsy Birdsley
Hospitalist**



**Janelle R.B. Smith, DO
Internal Medicine,
Primary Care**



**Brittney Taylor, APRN
Primary Care**



**Isidoros Vardaros, MD
Primary Care**

Provider Partners



John Bozdech
MD, FACP, FACG
Gastroenterology



Elie Chbeir
MD
Pulmonology



Jeffrey Fleischli
DPM, FACFAS
Podiatry



Meredith Fleming
APRN
Cardiology



Eli Goodman
MD
Wound Care



Nilesch Goswami
MD
Cardiology



Sharon Harris
MD
Endocrinology



Richard Hutchinson
PA-C
Pulmonology



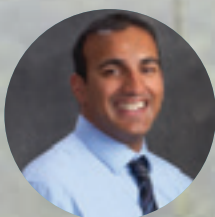
Christian Khoury
MD
Cancer Care,
Hematology-Oncology



Daniel Kimple
MD
Neurology



Matthew Knudson
MD
Urology



Karthik Koduru
MD
Cancer Care,
Hematology-Oncology



Angela Lafrenz
NP
Cardiology



Nasar Nallamothe
MD
Cardiology



Holly Novak
MD
Cardiology



Vitor Pastorini
MD
Cancer Care,
Hematology-Oncology



William Payne
MD
Orthopedics



Peter Perll
MD, FACS
General Surgery



Harsha Polavarapu
MD
Gastroenterology
General Surgery



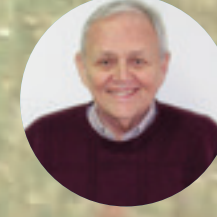
Charles Sheaff
MD
Wound Care



Mary Thompson
CNM
Obstetrics & Gynecology



Drake B. White
MD, MS
Orthopedics



Phillip Woerner
MD
Psychology-
Geriatrics



CELEBRATING 100 YEARS • 1921-2021

Our Mission

The mission of Culbertson Memorial Hospital is to provide quality, compassionate care to the communities we serve.

Our Vision

Culbertson Memorial Hospital will provide patient and family-centered healthcare in a safe, friendly environment.

Our Values

- Care that proves to our customers we will do our best to meet their needs.
- Attitudes that demonstrate we are here to serve our communities.
- Respect for all who enter our doors.
- Exceed the expectations of our patients.

cmhospital.com • (217) 322-4321

